

Motorola DTR600/700/720 series two-way radio

Firmware Update info

3-Jun-2019

DTR600/700/720 two-way radios firmware to be updated from:-

Firmware Version R01.00.02 to R01.01.00

Codeplug Version R01.00.00 to R01.01.00

Keypad Version R01.00.01 or R01.00.02 to R01.01.00

Affected Tanapa :-

SUPER TANAPA	Tanapa	Sales Model
PMUF1952A	PMUF1953A	DTS130NBDLAA
PMUF1954A	PMUF1955A	DTS150NBDLAA
PMUF1956A	PMUF1957A	DTS1504BDLAA
PMUF1958A	PMUF1959A	DTS1505BDLAA
PMUF1960A	PMUF1961A	DTS1502BDLAA
PMUF1962A	PMUF1963A	DTS150PBDLAA

This new version provides below features and capabilities

1. Scan - radio stay on a channel is able to scan for other Public groups channel and Private groups which has the same hopset/profile ID.
2. Group Caller ID - radio receiving screens will display the Caller ID/Name for group calls.
3. Fixed issue with long channel name for home channel.

Equipment/Tools needed to perform software update

1. Prepare the below equipment.
 - a. CPS Cable kit is PMKN4154A.
 - b. Single Unit Charger/docking station PMPN4468A.



Computer System Requirements

1. Computer with Windows 7 and Windows 10 operating system.
2. Computer with USB port.

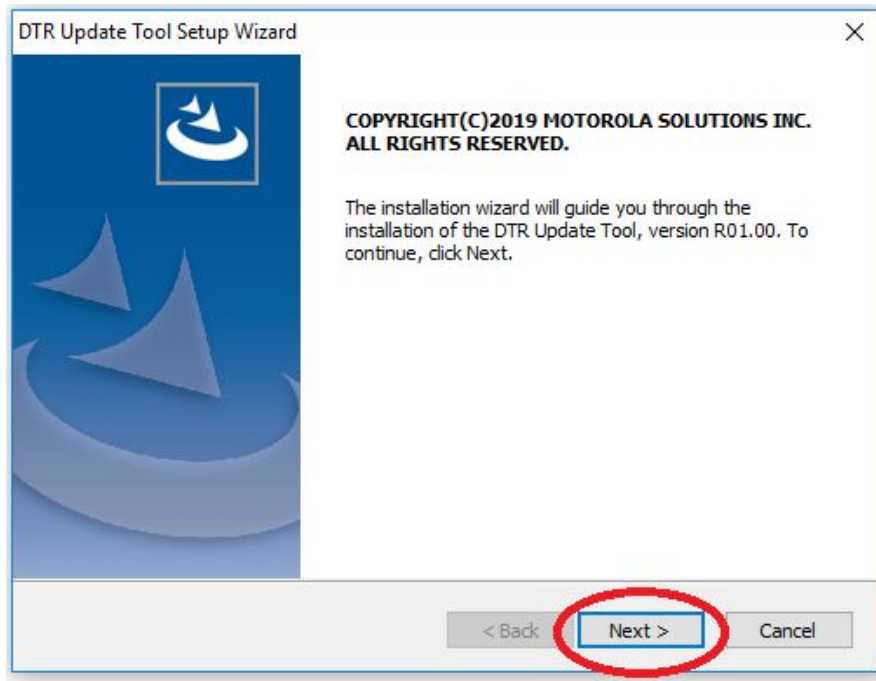
Note

1. Only 1 radio can be updated at any one time.
2. Please ensure radio battery is fully charged before update commences.

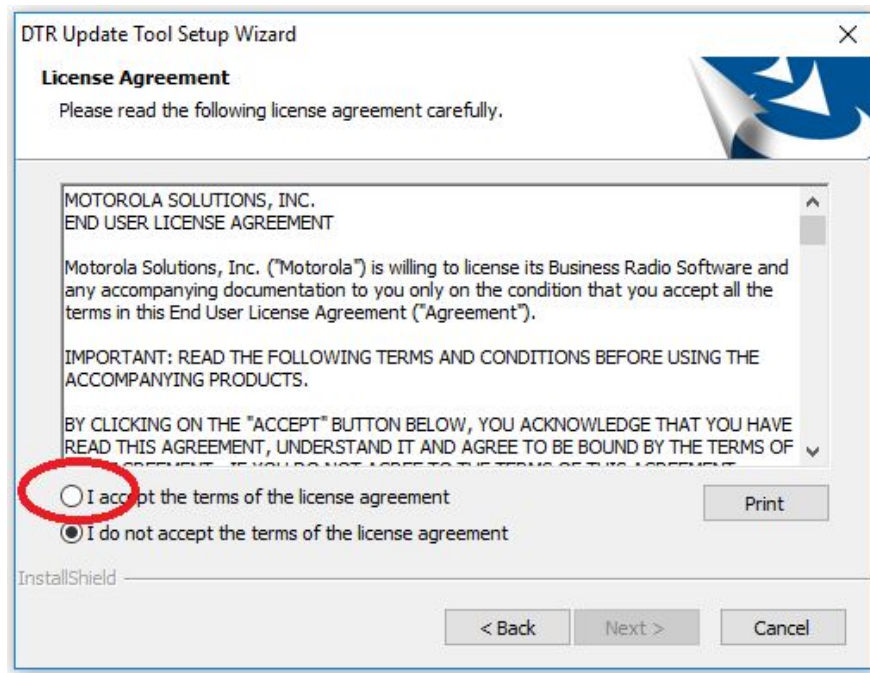
Setup Steps (one time)

1. Connect the programming kit docking/charging station to computer using the USB programming cable from the programming kit.
2. On the programming cable PMKN4154A, please make sure to set the mode switch to Digital CPS.
3. Observed your computer will scan and install the programming cable driver automatically at the background (task tray for Windows computer). This will take a while.
4. Please wait until the driver installation is completed.
5. Download and double click to install the Update Tool application (provided by Motorola Team) into the computer.

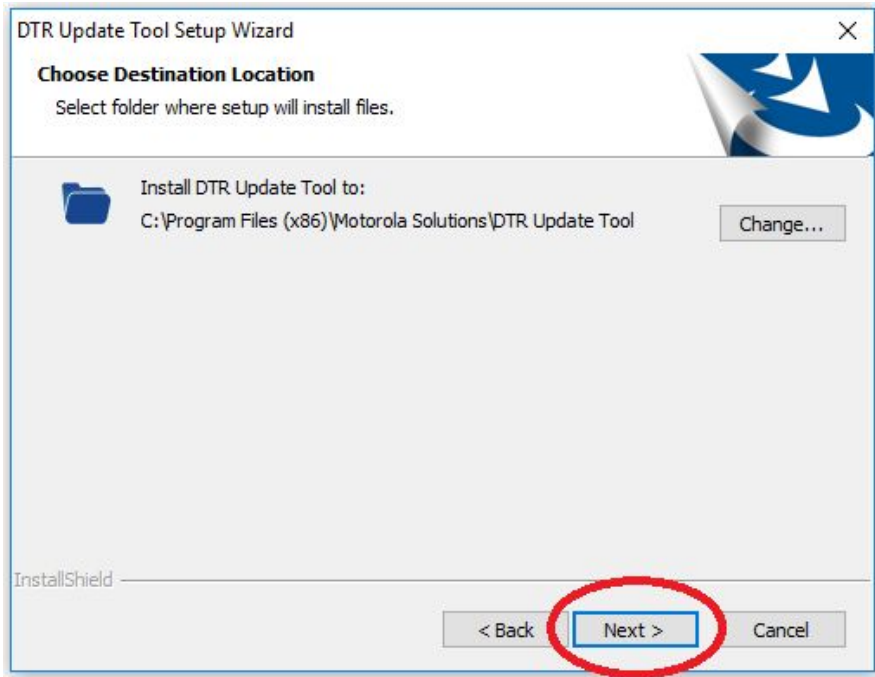
6. Click "Next" to install proceed installation.



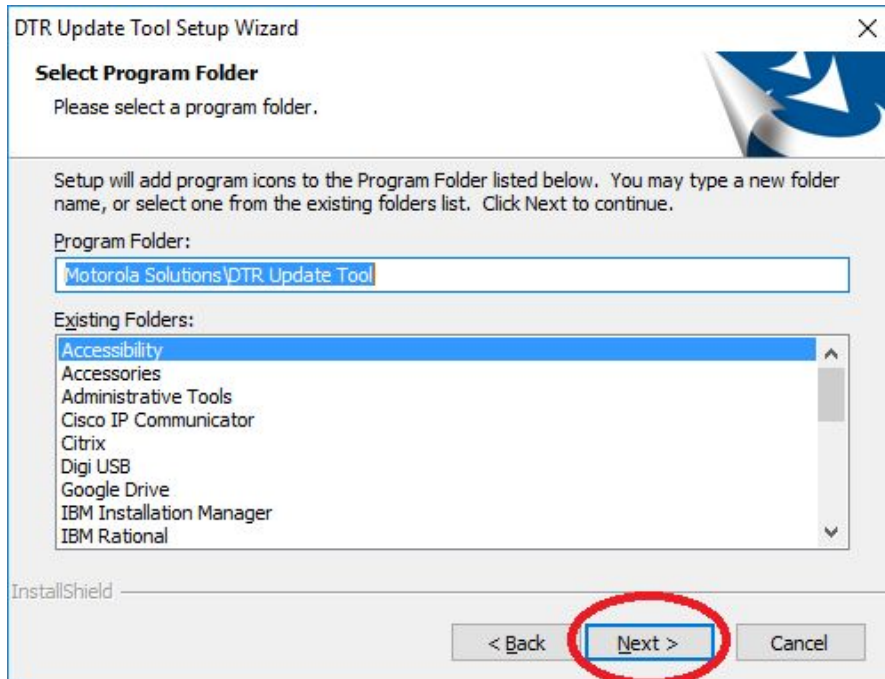
7. Click to accept the agreement and click "Next".



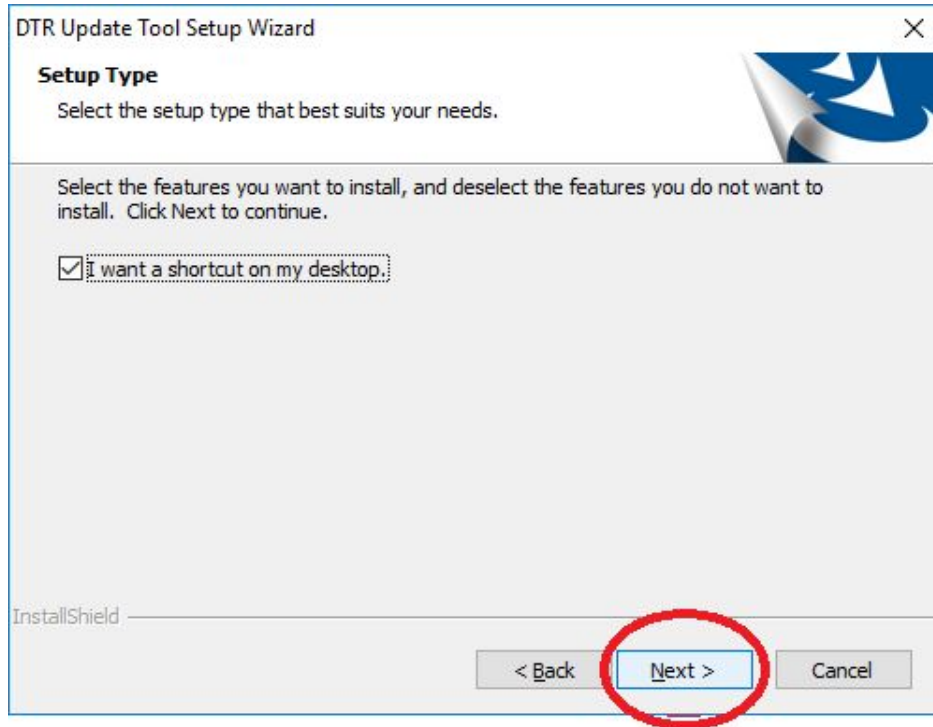
8. Click "Next" to proceed install in default location in your computer.



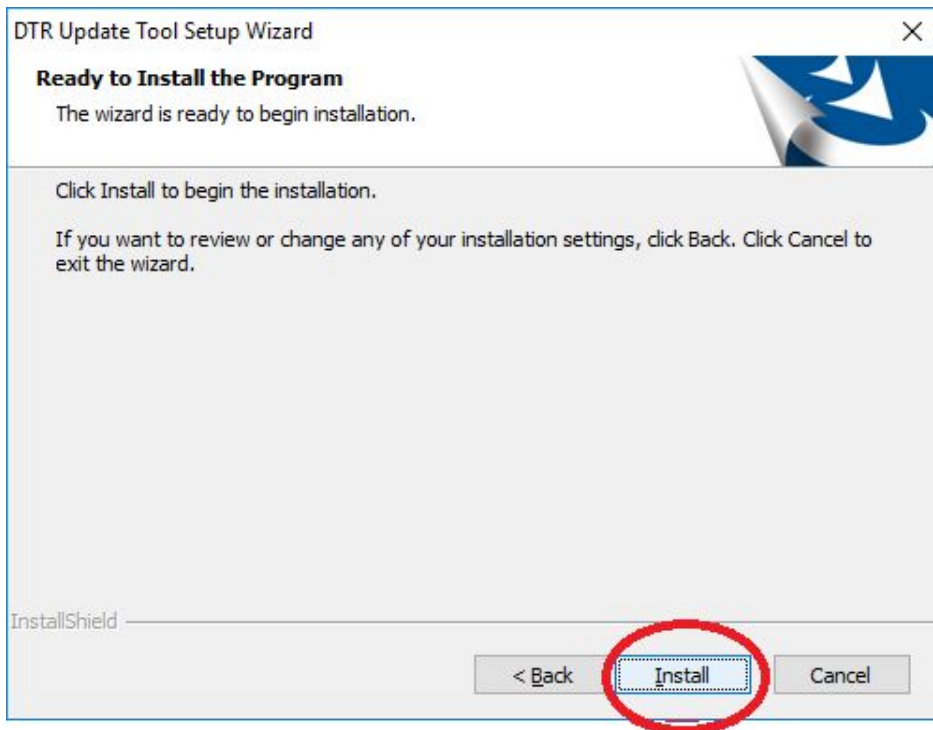
9. Click "Next" to select the default program folder.



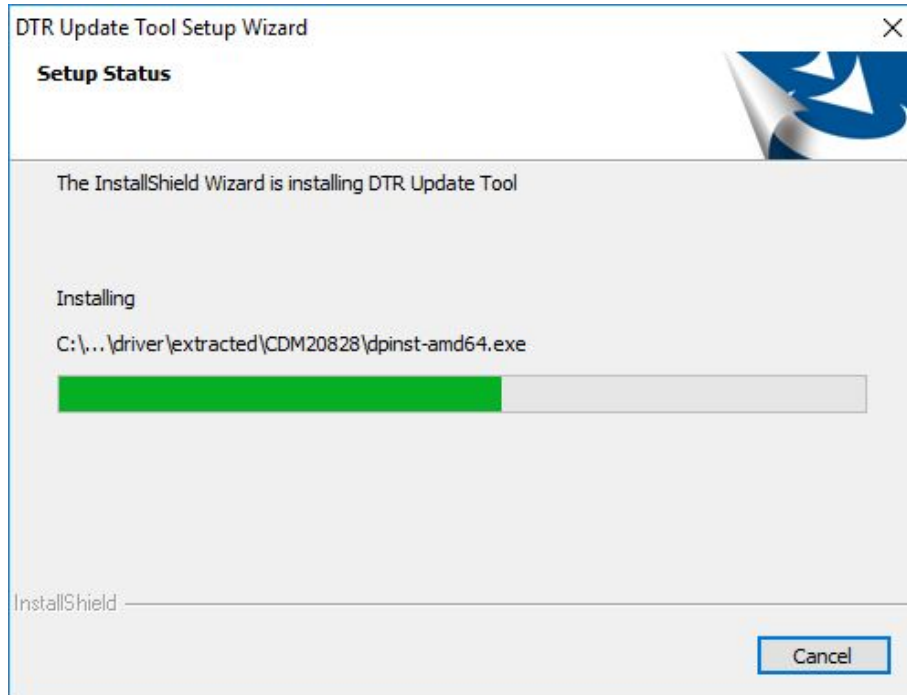
10. Click "Next" to proceed the install type.



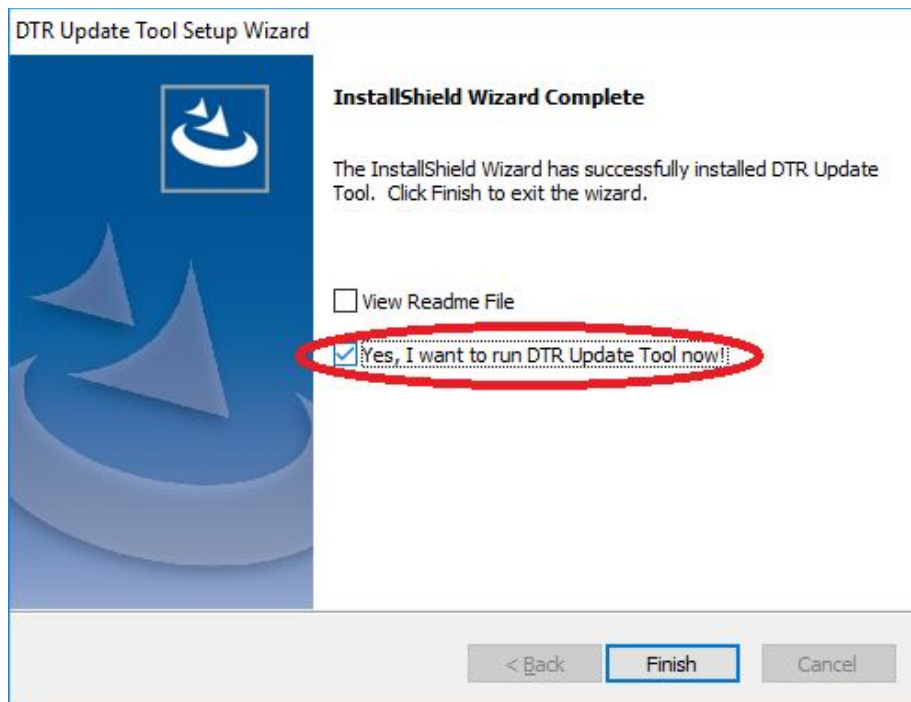
11. Click "Install" to proceed installation.



12. The installation will take a few minutes.



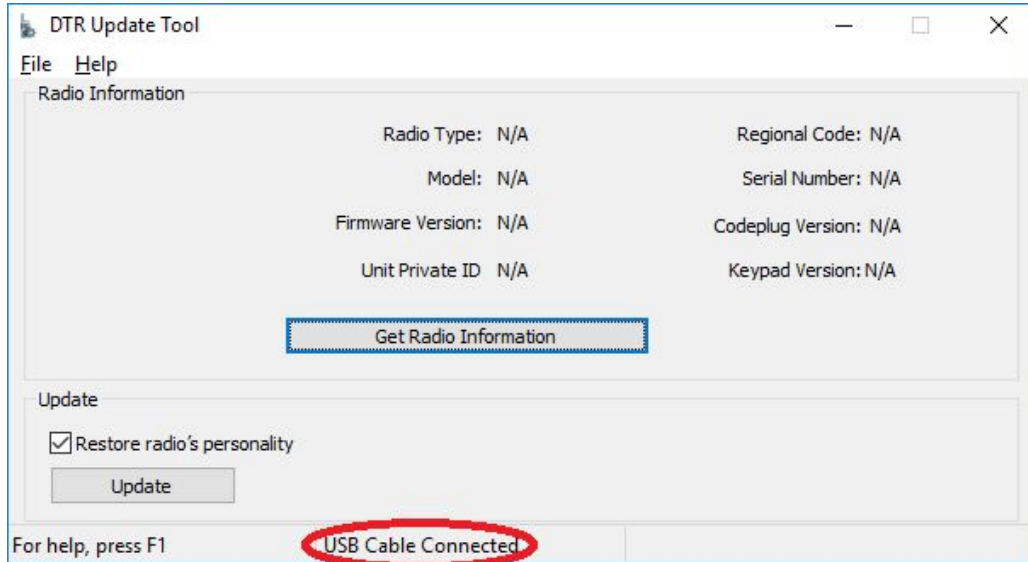
13. Once the installation finish, check the checkbox to run the Update Tool now. Then click "Finish".



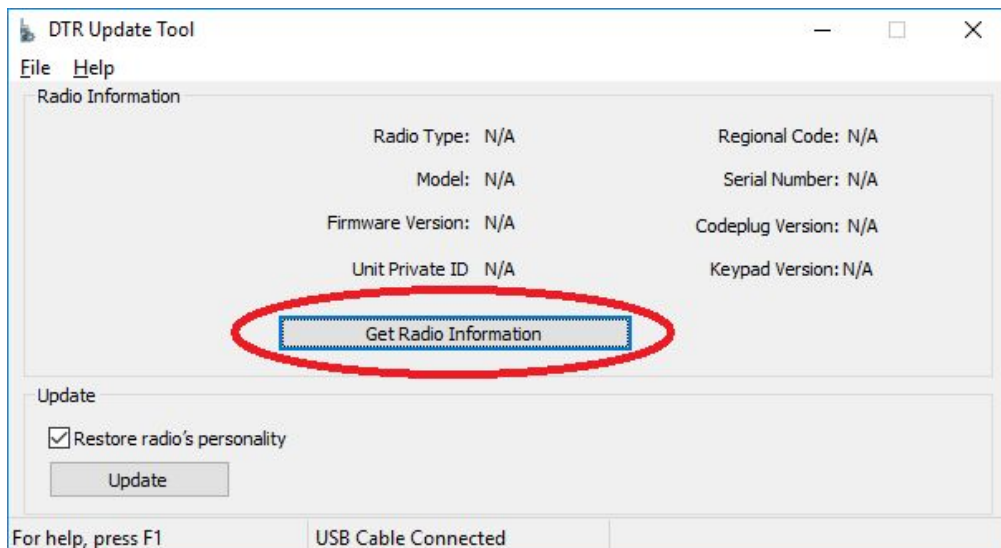
14. This ends your one time setup steps.

Steps to update radio firmware from R01.00.02 to R01.01.00

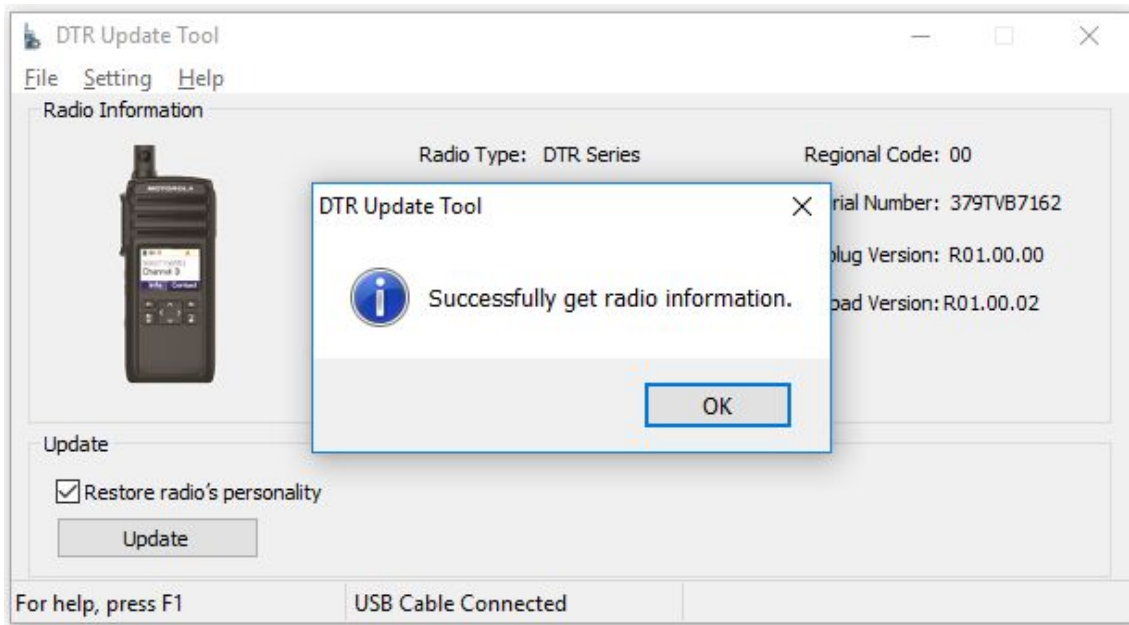
1. Before start, ensure no other USB devices are plugged into your computer except keyboard and mouse.
2. Execute/Run the Update Tool program with computer connected to radios via cable and docking station, please wait for a while, you should see “USB Cable Connected” at the bottom of the Update Tool.



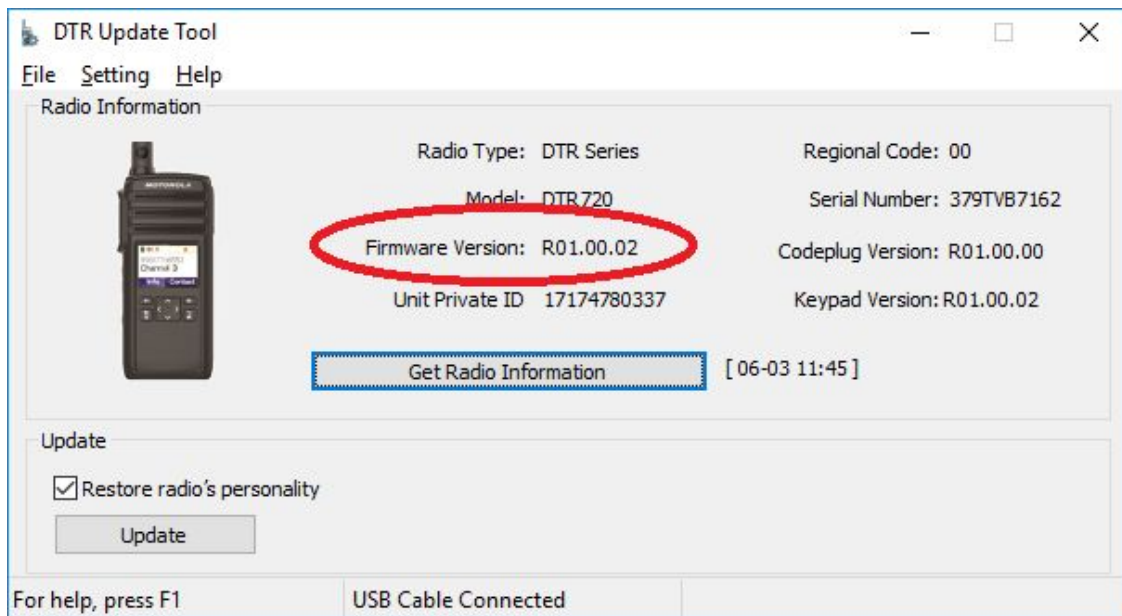
3. If you do not see “USB Cable Connected”, please check if your computer have successfully installed the programming cable driver.
4. **Ensure the battery is full** and inserted into the radio then turned ON the radio. Put the radio onto docking/programming/charging station.
5. Click “Get Radio Information” button to read the current radio information and show on the screen.



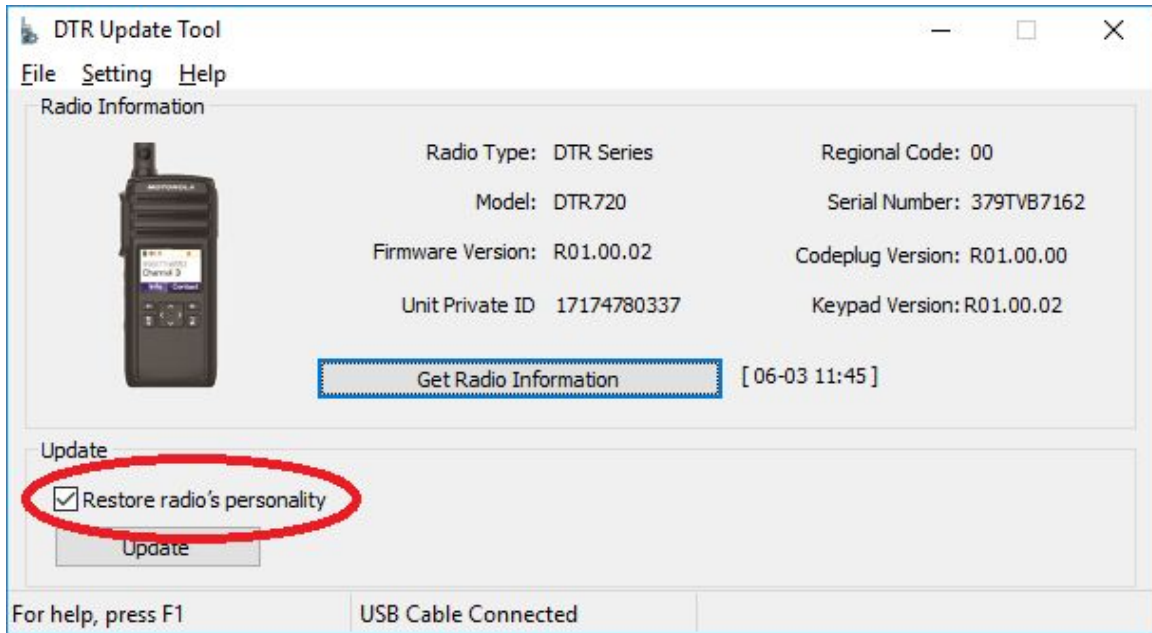
6. Observed a pop up show "Successfully get radio information".



7. Ensure the radio model is the one you want to upgrade and with current firmware version R01.00.02. Do not proceed update if the radio is not the correct model/firmware version.

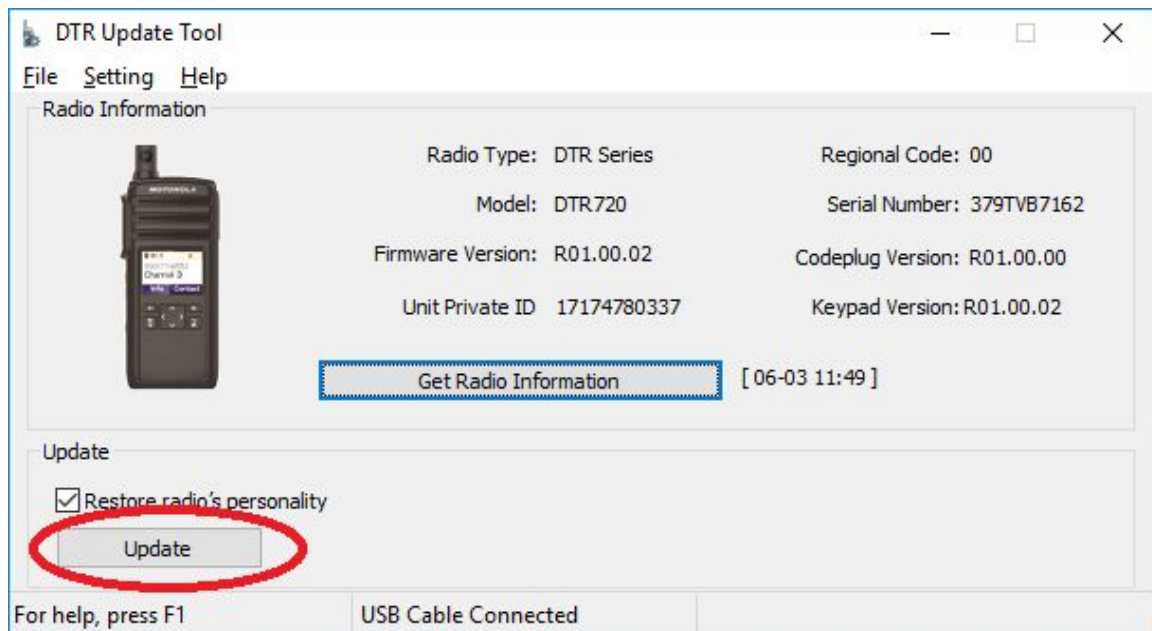


8. Click Restore if need you need to restore your previous configurations.

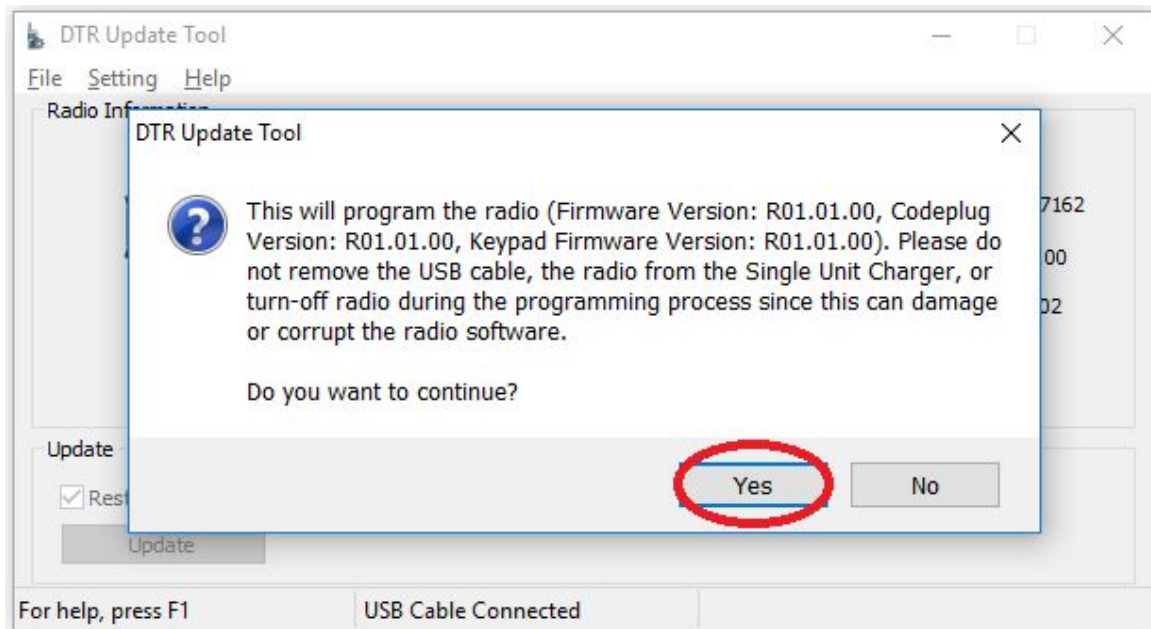


9. Click the “update” button to update the radio to the new firmware.

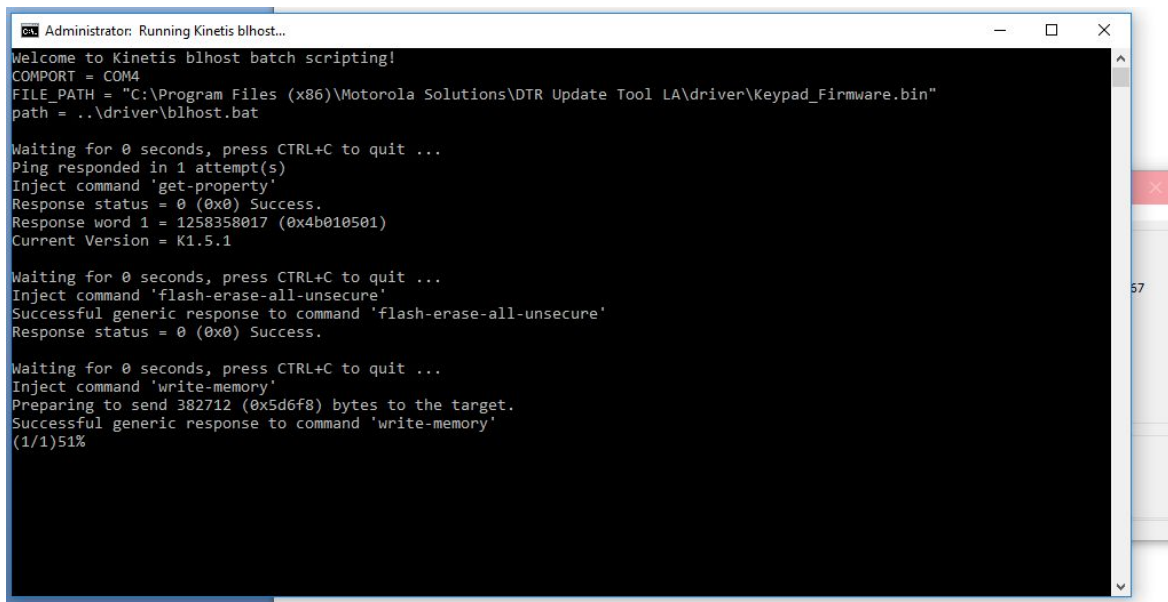
*****Do not disconnect and do not power down the radio during the upgrade process.**



10. A pop up will remind you on your update information and cautious. Click the “Yes” button.

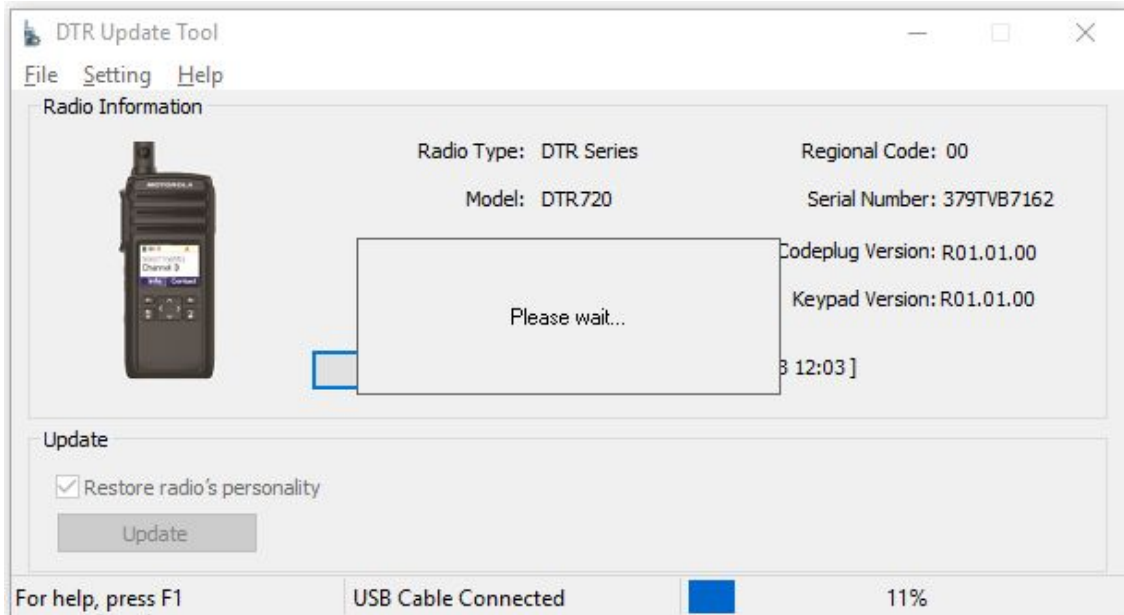


11. There will be a black pop up screen showing % of progress. Please do not press any button on your keyboard as that will pause the upgrading process. Please wait for the radio to be completely updated. This should take about 15 minutes. Do not worry about what is shown on the radio display at this moment.

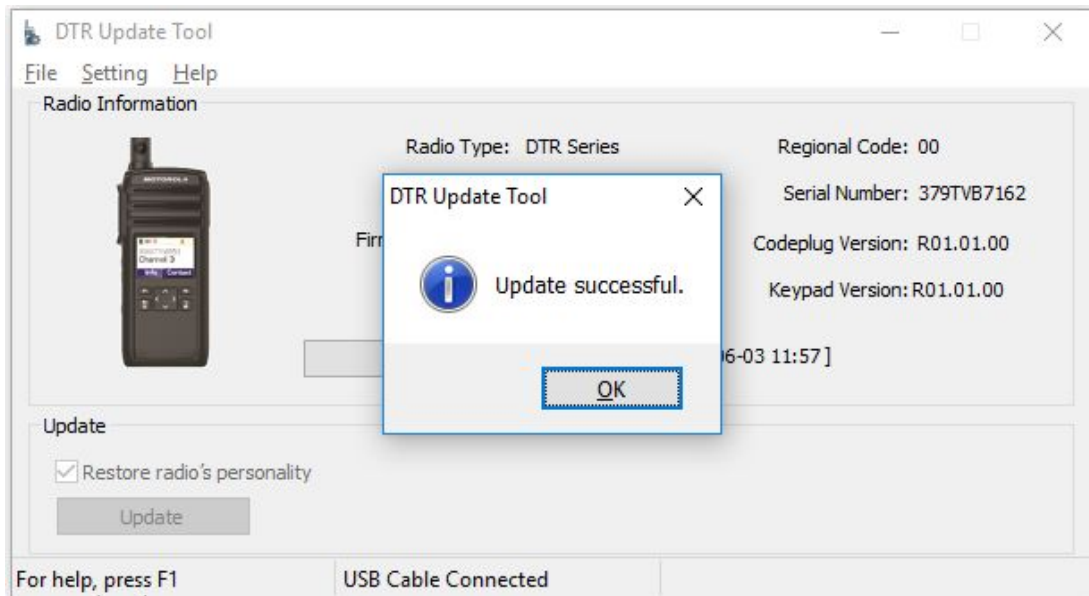


12. If you see failure, please try power cycle your radio and perform upgrade again.
13. If radio still cannot upgrade again or if radio shows any symptom cannot power up or showing any failure, please return your radio for warranty.

14. Screen will show Please wait and the progress.



15. Once update is completed, below screen will be shown.



16. Please wait for radio to complete the restart before unplugging the radio from the docking/charging station.

17. If you see failure, please try power cycle your radio and perform upgrade again.

18. If radio still cannot upgrade again or if radio shows any symptom cannot power up or showing any failure, please return your radio for warranty.

Test Steps

After upgrade, follow the steps to check the radio functionality:

1. Power up test - power up the radio as usual. Check if the radio powers up correctly and show the channel.
2. Transmit test - press PTT and ensure the other radio receive the transmission / can hear the audio.
3. Receive test - ensure this radio received the audio from the other radio.
4. Volume up and down test - test volume up and check the audio volume is increased. Test volume down and check the audio volume is decreased.
5. Channel test - change channel on two radios and test by transmit from one radio and receive on the other radio. Check if the audio is transmitted through.

Minimum PC Spec requirement

1. Intel core i5-3320M @2.60 Ghz
2. 8 GB RAM
3. Windows 7 Professional SP1, 64-bit OS
4. 320 GB HDD

Notes

*There will be a chance of failing during the update depending on the computer usage and environment.

*Please close all the running applications before start updating.

*If failure persists, please stop upgrade using this computer and try another computer. If failure still persists, please do not perform upgrade and get to Motorola support.